

Light T-shirt transfer inkjet paper

Follow this instruction you can design individual clothing and personalized gifts in a simple way. Transfer your favorite design, logo or photograph onto T-shirts, mouse-pads, cotton bags and more.

Notice:

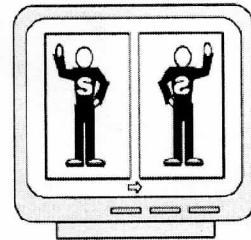
- DO NOT USE INKJET TRANSFER PAPER WITH A LASER PRINTER!
- Avoid scratch or fingerprints on the coated side before and after printing.
- Curled or folded sheets should not be used.
- Matte side is front side and printable side, backside shows a red square watermark.
- Store unused paper in the original package. Keep the open package in a cool, dry place. Do not store printed images or open packages in areas subject to high temperatures, high humidity and/or direct sunlight. Note that printed colors may change if storage recommendations are ignored.

STEP 1: PREPARING OF IMAGE

Follow attached **Recommended Printer Settings**.

Set the printer to **REVERSE** or **MIRROR IMAGE** prior to printing. The graphic must be printed in reverse, as a mirror image, on the transfer paper. If your printer does not have the reverse print option, it is necessary to use your software to flip or reverse your graphics.

Single sheet feeding is recommended. Make sure that the paper is straight and does not have any bent or creased corners



Important: After printing please let the print dry for at least 5 – 10 minutes. **DO NOT TOUCH THE PRINTED SURFACE.** Even if you print more than one sheet always use single sheet feeding and keep them separated for at least 10 minutes until the prints are completely dry.

STEP 2: PREPARING OF FABRIC

All fabric should be pre-washed. Washing removes all impregnations present at the fabric and other auxiliary materials, which could lead to a bad adhesion of transferred pictures.

Fabric should be cotton or cotton/poly blend. Canvas is also acceptable. Best natural results are achieved with white or bright colored fabric. Do not use black or very dark colored fabric.

Make sure the garment is completely flat and wrinkle free. Iron first if necessary to ensure flatness.

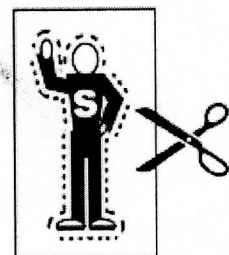
STEP 3: PREPARING OF IRON

Iron on flat, hard, heat resistant surface. **DO NOT USE IRONING BOARD!**

Preheat your iron 5 to 8 minutes on highest possible setting (linen setting).

DO NOT USE STEAM SETTING!

Better to cut out non-printed area, but leaving $\frac{1}{4}$ to $\frac{1}{2}$ inch margin to the border. Round off edges to avoid corner liftoff after washing.



Place the transfer paper **image side down** onto your receiver material.

Start ironing with straight, non-stop motions from top to bottom and side to side. Use the hot center of the iron to reach all areas, especially all corners and edges. Make sure that the whole image has been ironed.

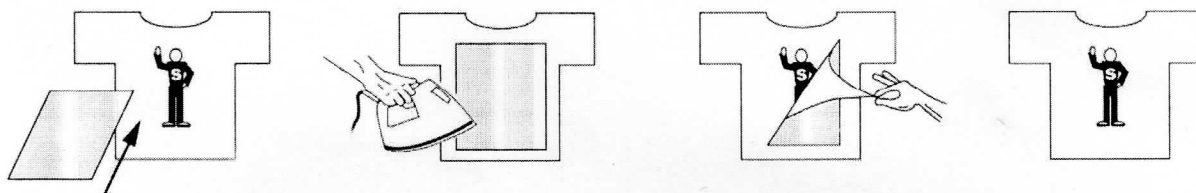
The complete transfer time depends on the size of your image. As guideline – iron for full page 180 sec, ½ page 90 sec, ¼ page 30 seconds. If the transfer time is too short and the transfer media does not adhere to the receiver material the image could come off partially or in full during the washing process. If the transfer time is too long or too much pressure the image becomes yellowish and/or the release paper does not release properly.

Let the transfer paper cool down completely. Gently fold the fabric near an edge of the transferred image then smoothly and evenly peel away the release sheet.

To achieve a sufficient adhesion it is necessary to re-iron the transfer print by using the release paper supplied. Place the release paper onto the transfer print and iron for:

60 seconds (one complete sheet) 30 seconds (for ½ sheet) 15 seconds (for ¼ sheet)

Make sure to overlap on all parts of the transfer, especially on all corners and edges. **Never iron an unprotected transfer print.** Before removing the release paper let it cool down completely.



● Re-ironing will reduce the gloss of the transfer and will produce a soft, silky feel as well as a natural “soft” cloth texture.

WASHING INSTRUCTIONS:

- Fabrics should be machine washed inside out (separately for the first time only) in cool or cold wash setting with a commercial available washing detergent. Wait at least 24 hours before washing.
- No bleach! Immediately remove garments from washer.
- Air-drying (transfer-print outside); Tumble dry at warm settings (transfer print inside)

Recommended Printer Settings*:

Printer	Media Type	Print Quality	Advanced
EPSON	Plain paper	Fine/ Quality – 720/1440/2880 dpi	Reverse or Mirror Image
HP	Plain paper	Best	Reverse or Mirror Image
CANON	T-shirt transfer	Default settings	Normal
LEXMARK	Iron-on transfer	Default settings	--

*Printer settings refer to the latest printer drivers available. Recommended printer settings are based on achieving optimal print quality for a photographic type image. For different types of application, different printer settings may apply. This Transfer Paper is a speciality product and slide color variations are normal and within specifications.